

## TRAFFIC LIGHT DIAMETER 100



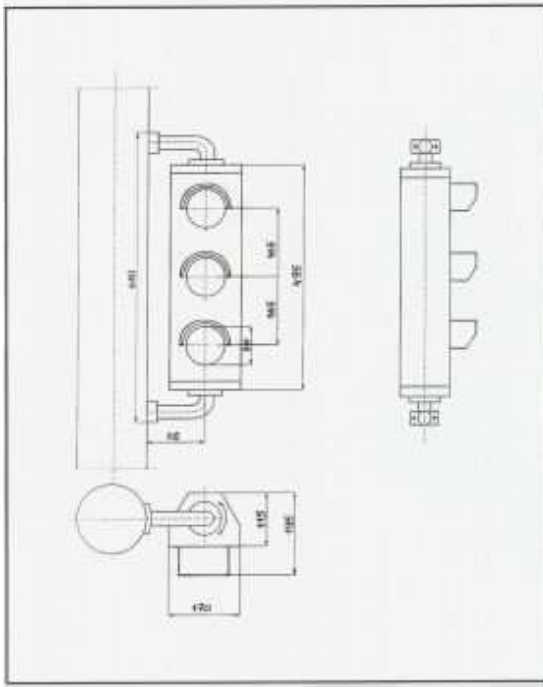
Traffic light diameter 100 are using for repeating signal sent from basic device (PHG, SU). They make an easier to see the light for drivers who stop too close and can't see the basic signal. This light can be use like a signalling for private parking and possession too. The reason why its mechanical damage and hard climatic conditions resistant is compact housing.

### **Technical data:**

Housing and lens are made of very resistant materials (ABS).

Basic version ( lights source)

type	lights source		supply
SM - 02/1, SM - 02/2, SM - 02/3	Bulb	40 W, 230/50 Hz	230 V 50Hz



	φ90
dimensions (3 chamber)	495 x 170 x 195 mm
humidity	95 % relative humidity
ambient temperature	-40 °C to +70 °C
weight	8 kg